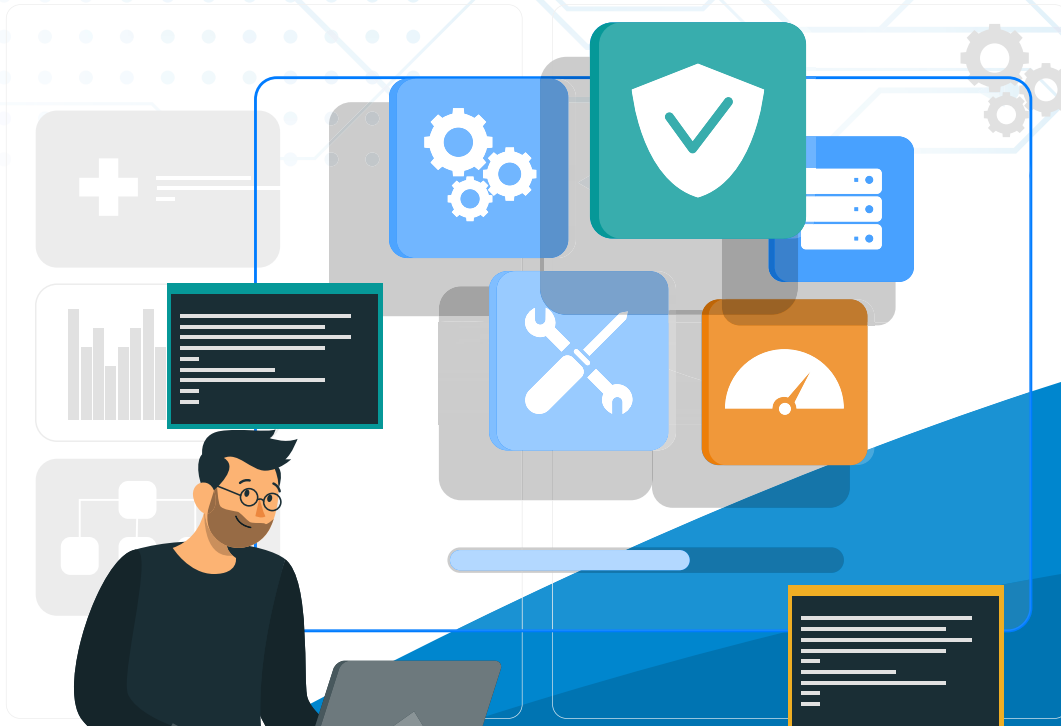


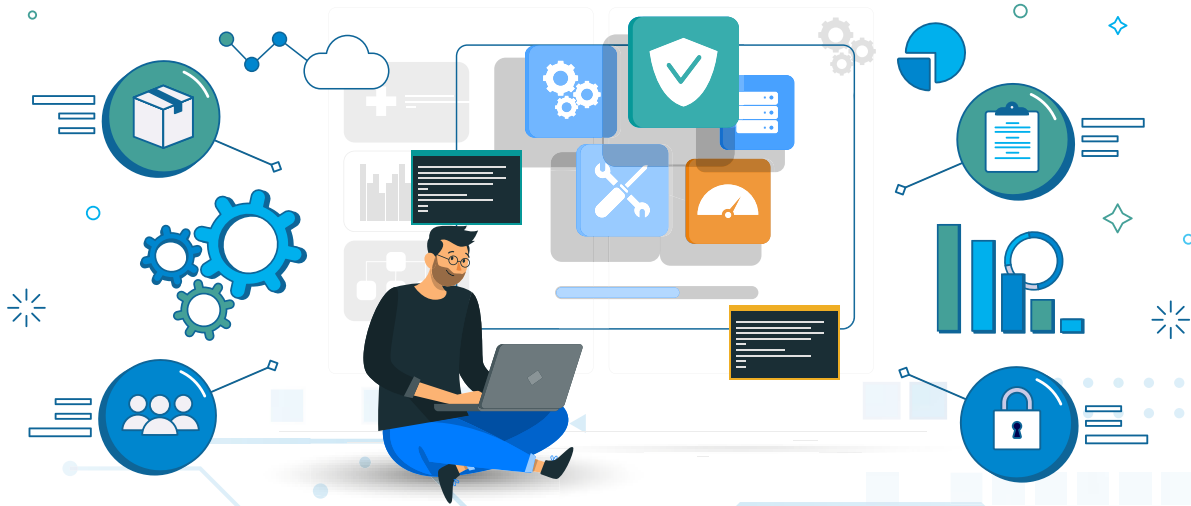


# ERP

Software that automatizes the integral management of the business by simplifying processes and boosting resources.







**GLMsuit ERP** is a solution that integrates every area of the company and provides fast and reliable information for decision making.



**MODULES SYSTEM**

 <b>TAXES</b>	 <b>BOOKKEEPING</b>	 <b>FIXED ASSETS</b>	 <b>ACCOUNTS PAYABLE</b>	 <b>TREASURY</b>	 <b>BANKS</b>
 <b>PAYMENTS</b>	 <b>PURCHASES</b>	 <b>WAREHOUSE</b>	 <b>BUDGETS</b>	 <b>BILLING</b>	 <b>ACCOUNTS RECEIVABLE</b>
 <b>BUILDINGS</b>	 <b>WEB PORTAL</b>	 <b>AUDITING</b>	 <b>WORKFLOW</b>	 <b>MANAGEMENT CONTROL</b>	 <b>SECURITY CONTROL</b>

**OUR SOLUTIONS ARE VERSATILE AND INTEGRABLE TO FACILITATE BUSINESS MANAGEMENT**

 <b>Flexible</b>	 <b>Integration</b>	 <b>Efficient</b>	 <b>Multi Company</b>
--	---	--	---

It has a business rule engine.

It allows the integration with mobile devices.

It supports the generation of an important number of lists.

It permits different management agreements.