



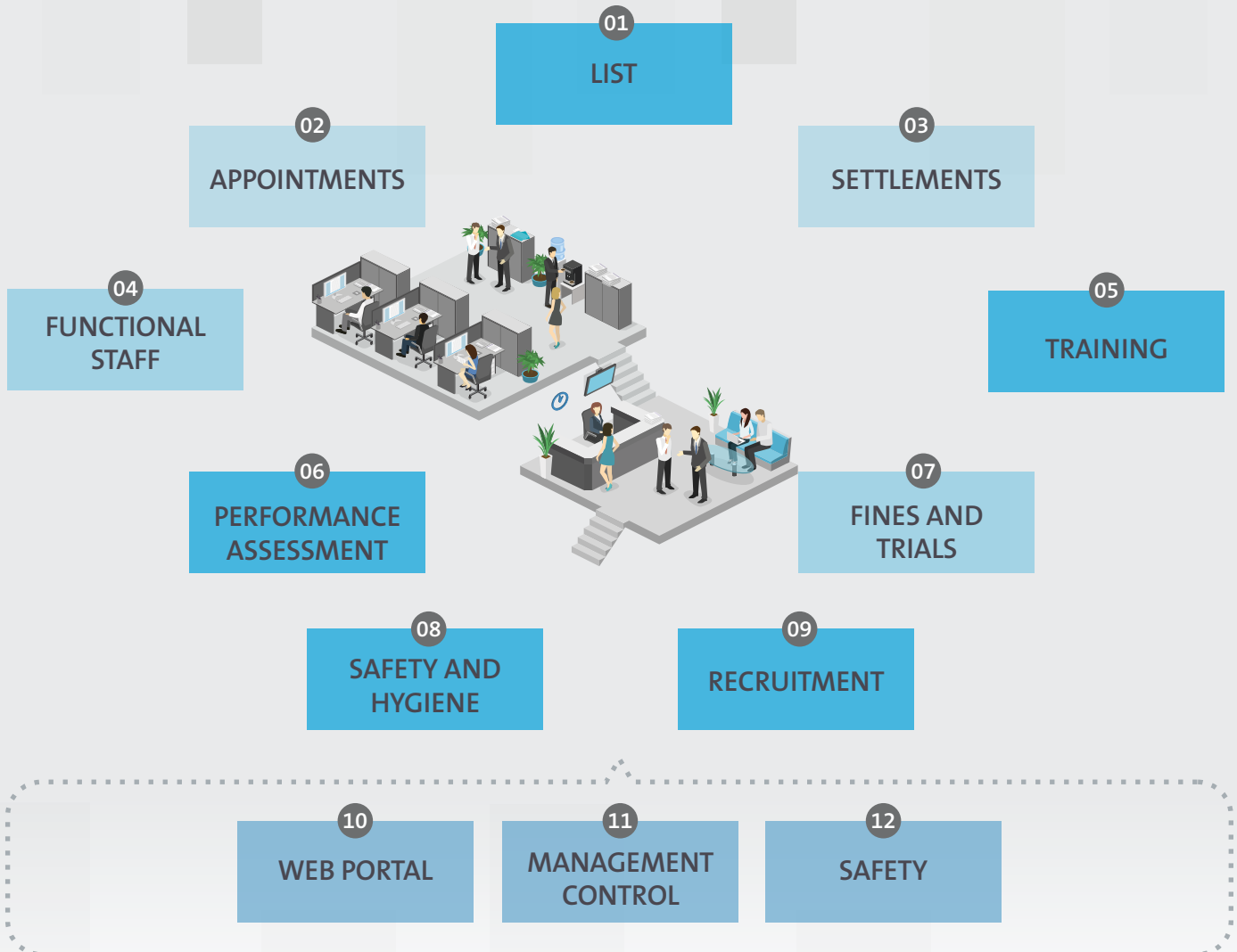
Software for the most valuable management assets.



GLMsuit HR is a solution that offers the companies the possibility to manage human talent in a globalized market.

Knowledge, technology and business

MODULES SYSTEM



BENEFITS OF A KEYTURN SOLUTION



Efficient:

It supports the generation of an important number of lists.



Integral:

It allows the integration with access control devices.



Multi-Agreements:

It permits different agreements management.



Flexible:

It counts with a business rule engine.



Advanced:

It has a staff Portal web.



Strategic:

It includes management control boards (BI).